



STUDENT WELFARE CLUB

**GOVERNMENT COLLEGE JAITHARI,
DISTRICT- ANUPPUR (M.P.) INDIA**

POLICY

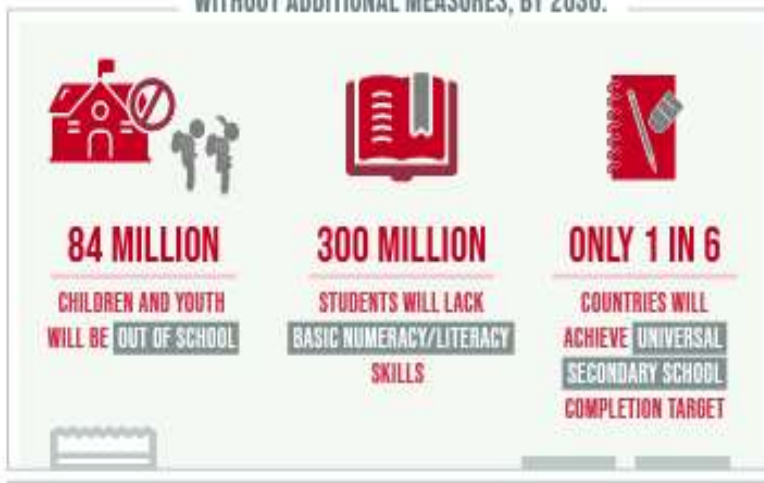


ENSURE INCLUSIVE AND EQUITABLE QUALITY EDUCATION AND PROMOTE LIFELONG LEARNING OPPORTUNITIES FOR ALL

DESPITE SLOW PROGRESS,

THE WORLD IS FALLING FAR BEHIND IN ACHIEVING QUALITY EDUCATION

WITHOUT ADDITIONAL MEASURES, BY 2030:

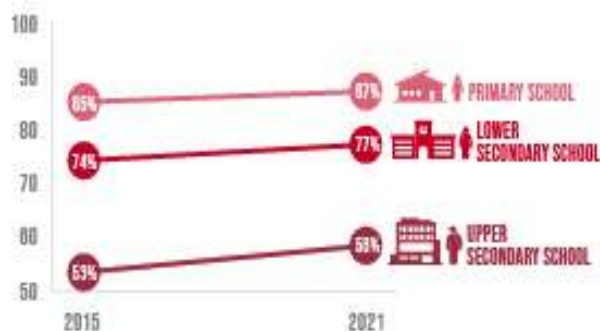


THE PANDEMIC

CAUSED LEARNING LOSSES IN **4 IN 5** OF 104 COUNTRIES STUDIED

PRIMARY AND SECONDARY SCHOOL COMPLETION RATES ARE **RIISING**, BUT THE PACE IS SLOW AND UNEVEN

COMPLETION RATES



LOW- AND LOWER-MIDDLE-INCOME COUNTRIES FACE A NEARLY

\$100 BILLION

ANNUAL FINANCING GAP

TO REACH THEIR EDUCATION TARGETS



Mr. Ashok Kumar Rathour

Adhyaksh

Janbhagidari Samiti Govt. College Jaithari, Anuppur (M.P.)

Forward



Dear Esteemed Members of Government College Jaithari,

As the Adhyaksh of the Janbhagidari Samiti of Government College Jaithari, District Anuppur, Madhya Pradesh, it gives me immense pleasure to present this foreword to our comprehensive College Policy. Since our institution's establishment in 2012, we have been on a journey of growth, learning, and community engagement. This policy document marks another significant milestone in our college's development.

The Janbhagidari Samiti, or Public Participation Committee, plays a crucial role in bridging the gap between the college and the community. Our committee's vision aligns perfectly with the college's mission to provide quality education while fostering a sense of social responsibility among our students.

This College Policy is a testament to our collective efforts to create an institution that not only excels in academics but also prepares students to be responsible citizens. It encompasses various aspects of college life, from academic standards to community outreach programs, reflecting our commitment to holistic education.

I urge all stakeholders - students, faculty, staff, and community members - to embrace this policy wholeheartedly. It is through your active participation and adherence to these guidelines that we can truly realize the potential of our institution.

As we move forward, let us remember that the strength of our college lies in the spirit of 'Janbhagidari' - public participation. This policy is not just a document, but a shared vision for our college's future. Together, we can build an educational institution that serves as a beacon of knowledge and social progress in our region.

I look forward to your continued support and cooperation in implementing this policy and in furthering the growth of Government College Jaithari.

Sincerely,

Mr. Ashok Kumar Rathour
Adhyaksh- Janbhagidari Samiti
Govt. College Jaithari
District Anuppur, (M.P.)



Dr. Ramesh Singh Wate

Principal

Govt. College Jaithari, Anuppur (M.P.)

Forward



Dear Students, Faculty, and Staff,

As the Principal of Government College Jaithari, District Anuppur, Madhya Pradesh, it is my privilege to present our comprehensive College Policy. This document serves as a cornerstone for our institution, outlining our vision, mission, and the guiding principles that shape our academic environment.

Our college policy is designed to foster an atmosphere of academic excellence, personal growth, and social responsibility. It reflects our commitment to providing quality education while nurturing the diverse talents of our students. The policy encompasses various aspects of college life, including academic standards, code of conduct, extracurricular activities, and community engagement.

I encourage all members of our college community to familiarize themselves with this policy. It is not merely a set of rules, but a roadmap for our collective success. By adhering to these guidelines, we create a harmonious and productive learning environment that benefits everyone.

As we move forward, let us embrace these policies with enthusiasm and dedication. Together, we can build a college that not only imparts knowledge but also shapes responsible citizens who will contribute positively to society.

I look forward to working with all of you in upholding the high standards set forth in this policy and in continually striving for excellence in all our endeavors.

Sincerely,

Dr. Ramesh Singh Wate
Principal
Govt. College Jaithari
District-Anuppur (M.P.)

Govt. College Jaithari, Anuppur M.P.

Department of Higher Education M.P.

Student Welfare Club Policy

1. Purpose: The purpose of the Student Welfare Club at [College Name] is to enhance the overall well-being and experience of students by organizing activities, events, and initiatives that focus on physical health, mental health, social engagement, and community support.

2. Mission: The mission of the Student Welfare Club is to create a supportive and inclusive environment that fosters personal growth, resilience, and a sense of belonging among students.

3. Scope: This policy applies to all members and officers of the Student Welfare Club, as well as to any individuals or groups collaborating with the club.

4. Club Structure:

➤ Leadership:

- The club will have elected officers, including a President, Vice President, Secretary, Treasurer, and any other positions deemed necessary.
- The officers will be responsible for planning, organizing, and overseeing club activities.

➤ Membership:

- Membership is open to all interested students, with no discrimination based on race, gender, religion, or other characteristics.
- Members are encouraged to actively participate in club events and contribute to the overall well-being of the college community.

5. Activities and Initiatives:

- The Student Welfare Club will organize a variety of activities and initiatives, including but not limited to workshops, seminars, physical fitness events, mental health awareness campaigns, and community service projects.
- All activities should align with the college's mission and values.

6. Collaboration:

- The club may collaborate with other student organizations, college departments, or external partners to maximize the impact of its initiatives.

- Collaboration should be approved by the club officers and relevant college authorities.

7. Funding:

- The club may seek funding from the college's student activities budget, grants, or external sources.
- All financial transactions must be transparent and in compliance with college financial policies.

8. Promotion and Communication:

- The club will use various communication channels, such as posters, social media, and college newsletters, to promote its activities.
- All promotional materials must be approved by the club officers and comply with college branding guidelines.

9. Reporting:

- The club will submit regular reports to the college administration detailing its activities, achievements, and future plans.
- Reports should be submitted at least once per semester.

10. Review and Revision: This Student Welfare Club Policy will be reviewed annually to ensure its continued relevance and effectiveness. Any necessary revisions will be made in consultation with club members and college authorities.

11. Implementation Date: This policy will be 06 July 2020.

Prepared By:- Dr. Khushboo Khan

Verified By :- Dr. Shobha Tiwari

**Coordinator IQAC
Govt. College Jaithari**

**Principal
Govt. College Jaithari
Anuppur (M.P.) 484330**